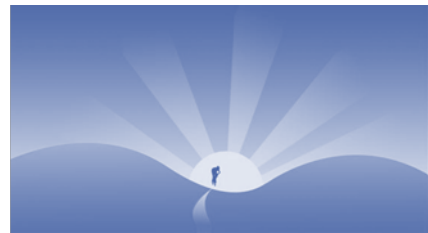


L&T-SARGENT & LUNDY LIMITED

L&T-Sargent & Lundy Limited is a joint venture between Larsen & Toubro, India and Sargent & Lundy L.L.C., USA. Established in 1995, it provides consultancy and engineering design services in the field of Power and affiliated sectors. With a professional staff consisting about 500 engineers and designers, it has grown from strength to strength in gathering extensive experience in the power plant engineering and consulting assignments. The company's value system is guided by the Vision and Mission statements which are an integral part of its work culture and ethos.

VISION

To become a leading integrated engineering solutions provider in the global power sector, continuously creating value for our stakeholders



MISSION

- Be responsive to customer needs, delivering optimal solutions and value-added services
- Ensure sustainable growth and professional excellence using state-of-the-art technology, process-driven approaches, eco-friendly solutions and IT enabled tools
- Foster a culture of mutual trust, respect, teamwork, continuous learning, innovation, challenge and employee empowerment to provide a growth-oriented workplace
- Adhere to fair, transparent and ethical practices in interactions with all stakeholders, in keeping the tenets of good corporate citizenship
- Remain flexible and agile, continually adapting to the changing business environment

ORGANIZATION BRIEF

L&T - Sargent & Lundy Limited (L&T-S&L) - born of the shared vision of two world - class companies - Larsen & Toubro Limited (India) & Sargent & Lundy L.L.C.(Chicago, USA).



Larsen & Toubro Limited (L&T) is over USD 18 billion technology, engineering, construction, manufacturing and financial services conglomerate, with global operations. L&T's commitment to customer service and concern for product quality has enabled the company to acquire market leadership in most of its major business lines.

Sargent & Lundy L.L.C. (S&L) Chicago is acknowledged as a premier force in power industry worldwide. S&L has been providing Engineering and Construction Management Services for over 125 years. S&L has designed over 1102 Electrical Generating units representing approximately 1,57,409 MW of capacity of Power Plants, which includes combined cycle power plants, gas based, coal based projects, nuclear power plants and renewable energy power plants.

L&T-S&L provides a complete range of engineering and design of power plants from concept to commissioning of open/simple cycle plants, combined cycle plants, cogeneration plants, coal based plants - both subcritical and supercritical technology and associated fields. L&T-S&L is also expanding its horizons in the Renewable (Solar/Wind/Biomass) Energy, Renovation & Modernization and Transmission & Distribution space.

Since inception, L&T-S&L has engineered numerous prestigious power projects in India and abroad. Its experience includes overseas projects carried out in USA, Saudi Arabia, Kuwait, Oman, UAE, Qatar, Jordan, China, Thailand, Malaysia, Indonesia, Sri Lanka, Bangladesh, Nigeria, Central America, Algeria, Morocco, Zimbabwe, Mozambique, Kenya, Turkmenistan and many others. L&T-S&L has provided engineering services to esteemed customers like Doosan, HDEC, GS-E&C, Al-Toukhi, Alghanim, Ronisans, Siemens, Radicon Gulf, SSEM, AJEC, Arabian Bemco, Sadelmi Power, Jubail Energy, Dubal, Yamama Cement, Toshiba, YTL, Mitsui, Sembcorp, General Electric, Adani Power, Vedanta, NTPC, BHEL, GDF Suez, Fortum, KPMG, Orange Power, SBI, IICI, PFC, REC, IDFC to name a few.

PORTFOLIO OF SERVICES OFFERED

L&T-S&L offers a gamut of services from concept to commissioning of power plants both in Indian and International markets. It operates under roles such as:

- EPC Contractor's Engineer
- Owner's Engineer
- Lender's Engineer
- Special Engineering services



Services offered through above roles are as under:

- Site selection
- Conceptual design
- Technology evaluation and selection
- Project feasibility study
- Detailed project report
- Tender specification
- Technical bid evaluation
- Vendor drawing review
- Statutory clearance assistance
- Pre-bid proposal Engineering
- Basic engineering
- Detail engineering
- Procurement assistance
- Project Management and Co-ordination
- Field Engineering Services
- Inspection and expediting
- Support for pre and post commissioning
- Technical Support for Performance Guarantee Testing
- Project Document Review
- Project Progress Review
- Project O&M Review
- Due-Diligence Services
- Special Studies like Efficiency improvement, reduction of greenhouse gas emission
- Power Sector Reforms and other associated studies
- Repowering and modernization studies

Transmission and Distribution Services:

- Single Line & Protection Diagram
- Design Calculation
- Layout engineering, Grounding, Lightning & Lighting
- Raceway design
- Vendor drawing Review
- Interconnection
- Cable schedule

Power System Studies:

- Load Flow & Voltage regulation
- Steady state & dynamic motor starting study
- Short Circuit
- Transient Stability
- Relay co-ordination & Protection system study
- Switching & Lightning surge analysis
- Insulation Co-ordination study
- Harmonic Analysis
- Power Evacuation study

PROFESSIONAL STRENGTH

L&T-S&L has presently an overall strength about 500 professionals dedicated to consultancy services in the field of Power Plant engineering and Power Sector in general, based at Vadodara, Gujarat, India. Our professionals have extensive experience in successful delivery of various prestigious power projects. Our strength is further enhanced with the application of state of the art software as well as various in-house developed softwares deployed for engineering projects.



CONTACT INFORMATION*Head Office*

L&T – Sargent & Lundy Limited
6th Floor, East Block -1
Gate No. 1, L&T Knowledge City
NH 8, Between Ajwa- Waghodia Crossing
Vadodara-390019, Gujarat, INDIA
Tel: +91 265 245 6000 /6001

www.lntsnl.com

Contact

Chief Executive
Tel: +91-265-245-6634

Business Development
Tel: +91-265-244-5457
+91-265-244-5446
+91-265-244-5322

Email: Ltsl@Lntsnl.com